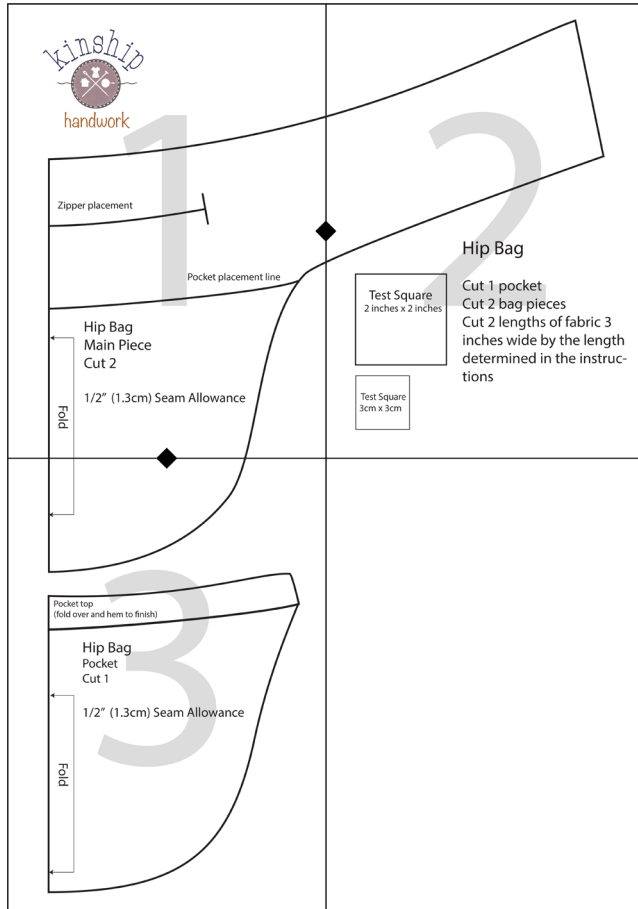




Hip Bag

Print at Home
Layout and
Test Square



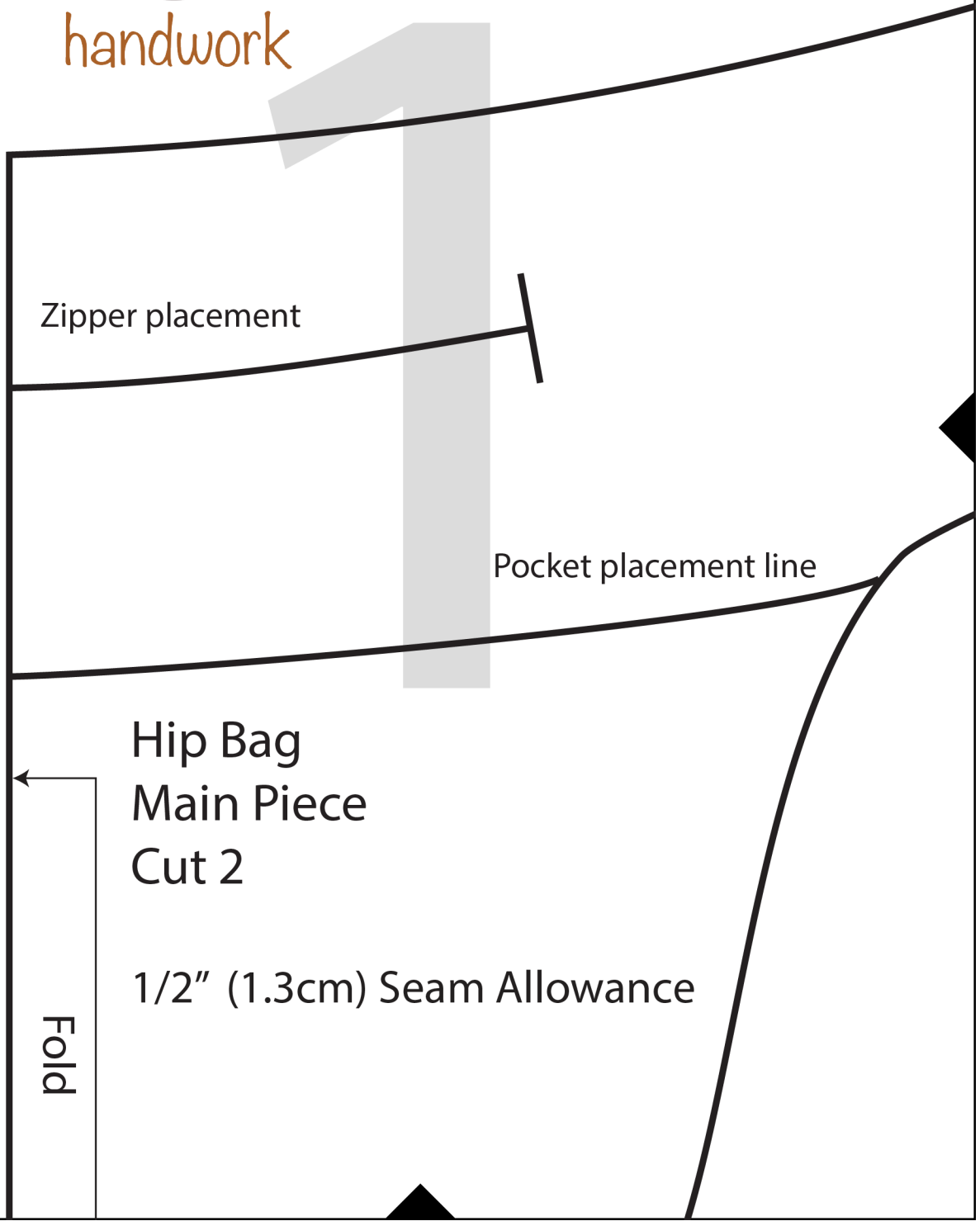
Test
Square
2" x 2"

Test
Square
3cm x 3cm

Kinship



handwork



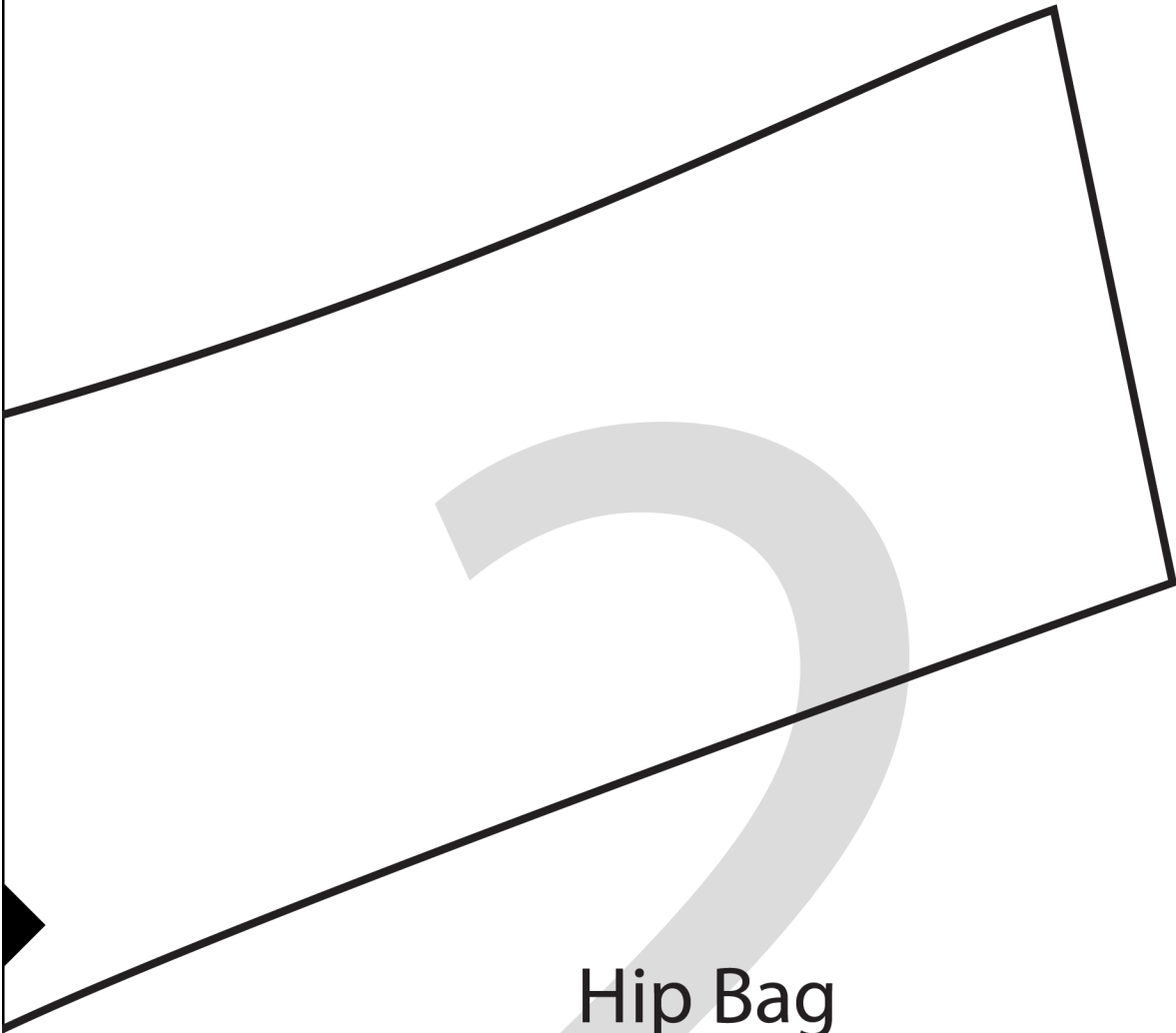
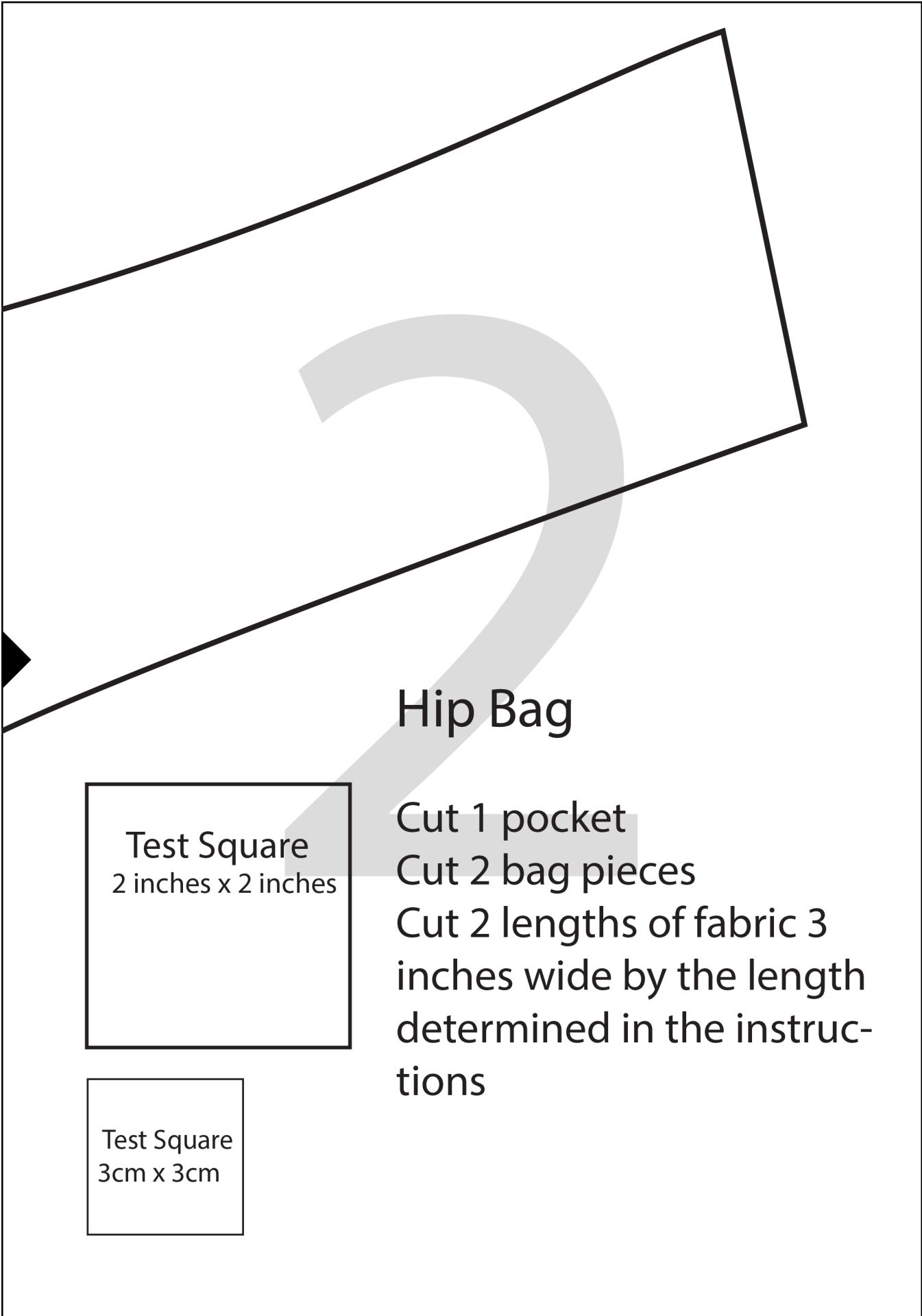
Zipper placement

Pocket placement line

Hip Bag
Main Piece
Cut 2

1/2" (1.3cm) Seam Allowance

Fold

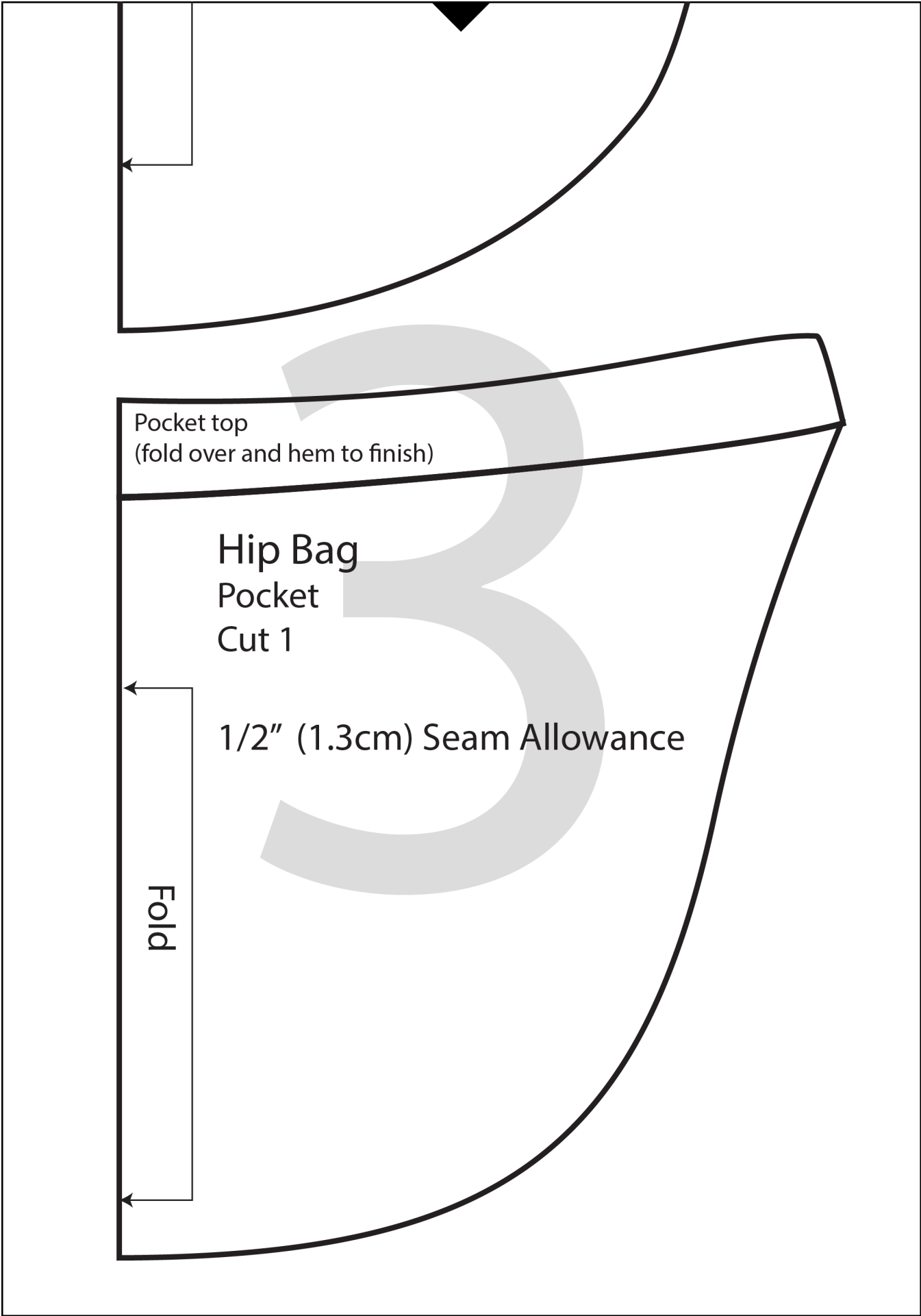


Hip Bag

Test Square
2 inches x 2 inches

Test Square
3cm x 3cm

- Cut 1 pocket
- Cut 2 bag pieces
- Cut 2 lengths of fabric 3 inches wide by the length determined in the instructions



Pocket top
(fold over and hem to finish)

Hip Bag
Pocket
Cut 1

1/2" (1.3cm) Seam Allowance

Fold